



2019 THE YEAR FOR MULTIPLES.....



From a double extension for
Abeking & Rasmussen
in 2007.....

MIRAI SHIPS INC.
KESENUMA-SHI, MIYAGI JAPAN



**Commissioned:
First Quarter 2019**

2,580 ton Shiplift
with End Transfer Carriage
Servicing Fishing and Commercial
Vessels up to 65 meters



SAVANNAH YACHT CENTER
SAVANNAH, GEORGIA, USA



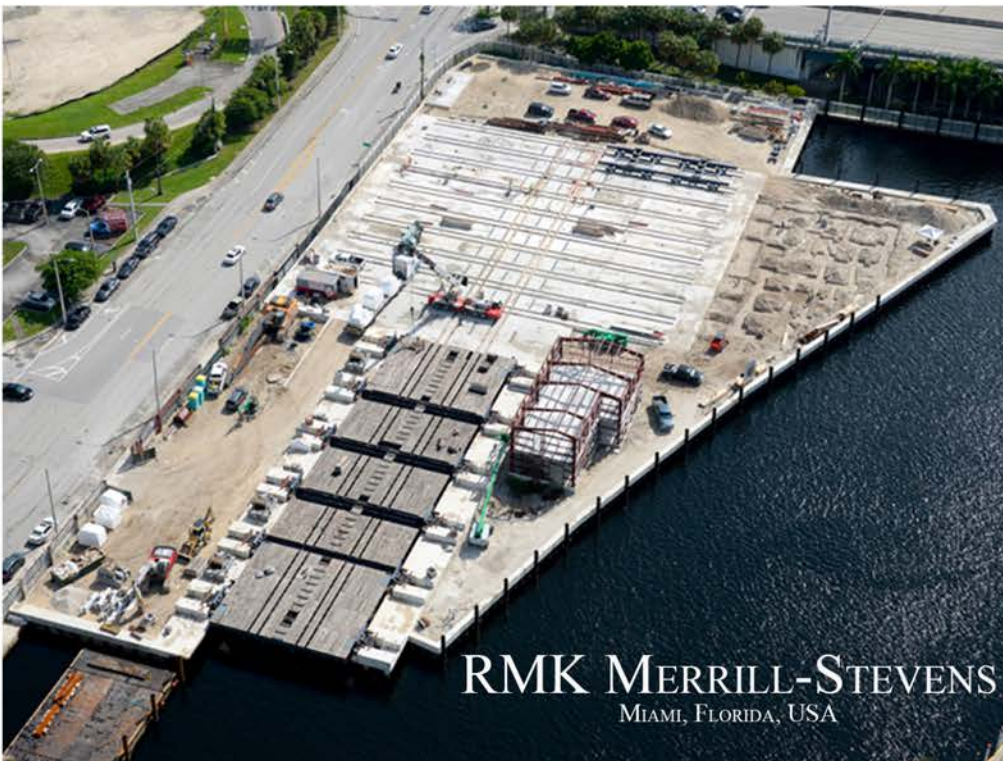
**Commissioned:
Third Quarter 2019**

3,240 ton Shiplift
with Large Transfer Area
capable of servicing over
six 80m Yachts Simultaneously



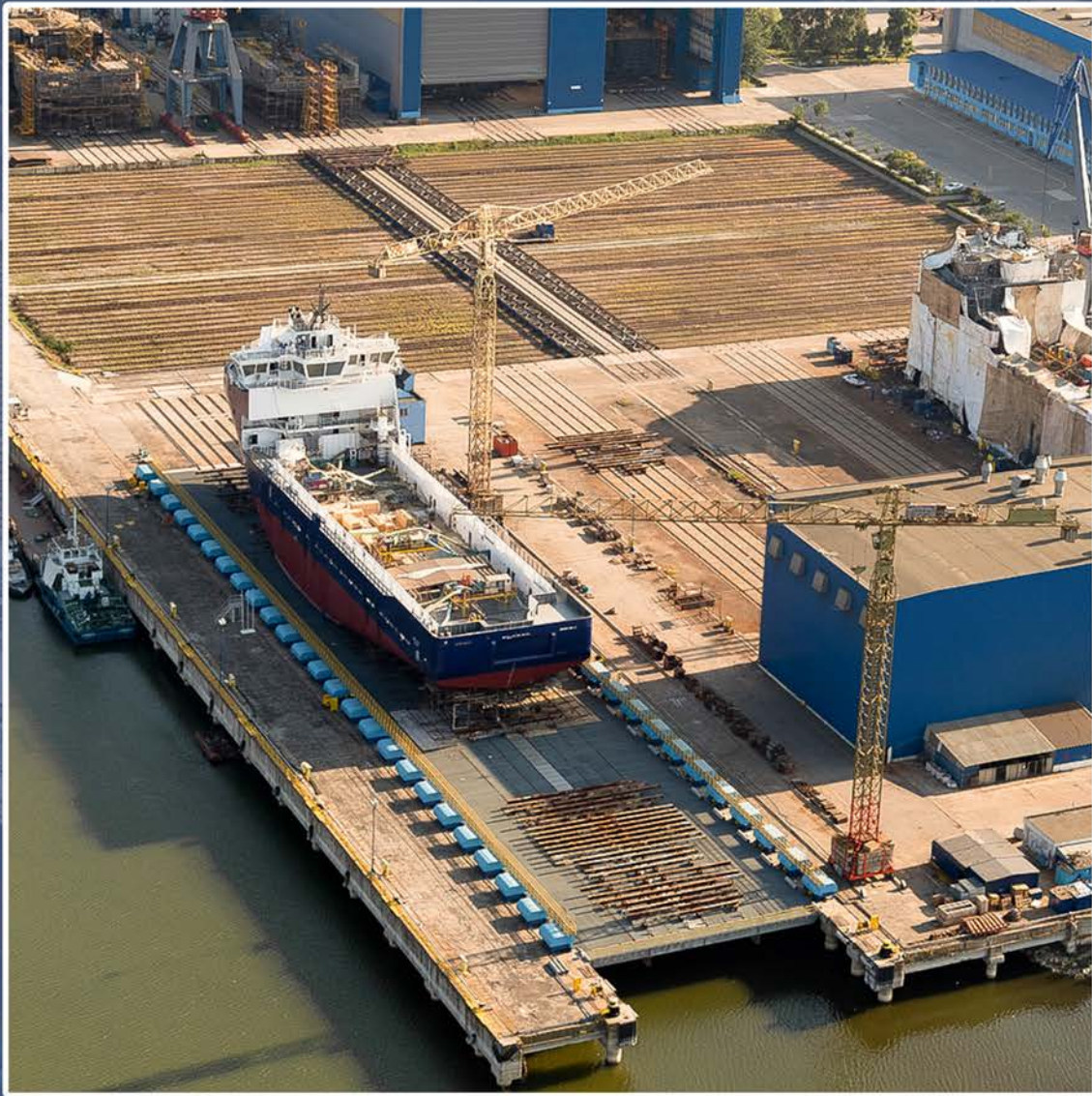
**Commissioned:
Third Quarter 2019**

4,800 ton Shiplift
with Large Transfer Area
capable of servicing up to
Nine Superyachts up to
115m in Length on dry



**Platform and Hoists Set:
Third Quarter 2019**

2,700 ton Shiplift
with Transfer Area
capable of lifting
yachts up to 72m in lenth



CONTINUING THE LEGACY
THAT CREATED THE MODERN SHIPLIFT.....

MORE COMING IN 2020